



**TELEHOUSE**

*Every connection matters*

Global Data Center Solutions

# Telehouse Bangkok

## Purpose-Built Interconnection Data Center

Connections are the very fabric of Telehouse.  
As one of the most-connected ecosystems globally,  
we believe every connection matters.



# Quick Facts

**3,000** CUSTOMERS WORLDWIDE 

**MORE THAN 30 YEARS** OF INDUSTRY-LEADING EXPERIENCE

Over **45** Data Centers in **10+** Countries 

Located across the globe in the North America, Europe and APAC regions


Adheres to more than **300** standards for facility specification, operation and service provision

CARRIER-NEUTRAL

**1,000+**

Connectivity Partners

**560,000+** SQUARE METERS OF SPACE

From a single half-rack to large, dedicated suites 

**99.999%** UPTIME SLA 

**AVG OF 20 MVA POWER** PER DATA CENTER

## Worldwide Data Centers

Telehouse operates over 45 data center sites around the world, delivering a consistent level of high quality service. These include the following:

- Canada**
- Toronto 151 Front St West
  - Toronto 250 Front St West
  - Toronto 905 King Street West

- France**
- Paris Voltaire
  - Paris Magny
  - Paris Magny 2

- United Kingdom**
- London North
  - London North Two
  - London East
  - London West
  - London West Two (Opening in 2028)
  - London South

- China**
- Beijing BDA
  - Beijing BEZ
  - Shanghai Zhangjiang
  - Shanghai Jinqiao

- Japan**
- Sendai
  - Oyama
  - Tokyo
  - Nagoya
  - Osaka
  - Fukuoka

- Germany**
- Frankfurt

- Turkey**
- Istanbul

- Hong Kong**
- Hong Kong CCC

- United States West Coast**
- Los Angeles

- United States East Coast**
- New York Teleport
  - New York Chelsea

- Singapore**
- Singapore

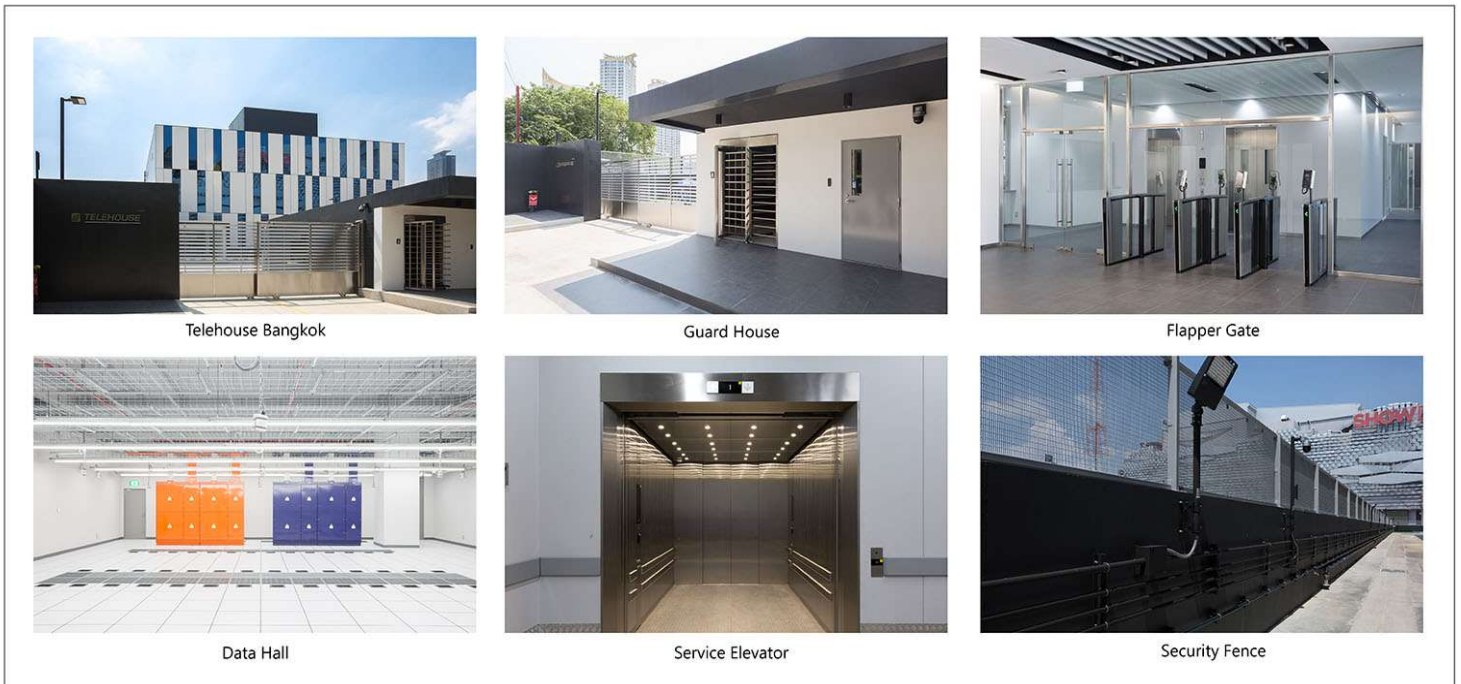
- Thailand**
- Bangkok

- Vietnam**
- Hanoi

# Service Overview

Leading the way in global business with high performance specification

Building		Facilities	
<b>Location</b>	Bangkok Rama 9 CBD area	<b>Building Power Receiving</b>	9.5 MVA 2 Different Substations
<b>Total Area</b>	9,000 sqm (3 Stories)	<b>Generator Configuration</b>	N+1 Backup 48 hrs. at full loads
<b>Ceiling Height</b>	3,500 mm (Raised Floor to Ceiling)	<b>UPS Configuration</b>	2N Backup 10 mins. at full loads
<b>Raised Floor Height</b>	900 mm	<b>Power/Rack</b>	<ul style="list-style-type: none"> <li>Power/Rack up to 15 kW</li> <li>Diverse Power Feed</li> </ul>
<b>Floor Load</b>	1,500 kg / sqm	<b>Cooling System</b>	N+1 DX Air Cooling System
<b>Parking</b>	Available	<b>Fire Extinguishing</b>	Nitrogen Gas (IG100)
<b>Service Elevator</b>	Maximum Load (5,000 kg) (W) 2,500 mm, (D) 3,500 mm, (H) 2,700 mm	<b>Network</b>	Carrier Neutral
<b>Loading Dock</b>	Available	<b>Cable Route</b>	4 Diverse Fiber Route Ducts



## Service Menu



### Colocation

- Shared Space
- Dedicated Space
- Cage
- Suite



### Direct Connect

A private link to AWS cloud services enhances throughput and ensures the stability of our customers' networks.



### In-House Cabling

Well-structured cabling solutions ensure optimal performance.



### Remote Hands

24/7 technical assistance for equipment management and troubleshooting is available.



### Carrier Arrangement

Connectivity with various carriers ensures maximum flexibility and redundancy.



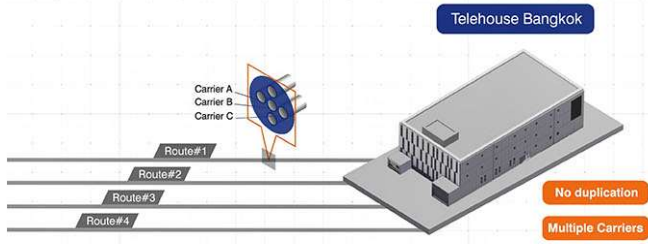
### Ideal Operation space

Furnished office spaces and meeting rooms are available.

# Secure, Resilient and Carrier-Neutral

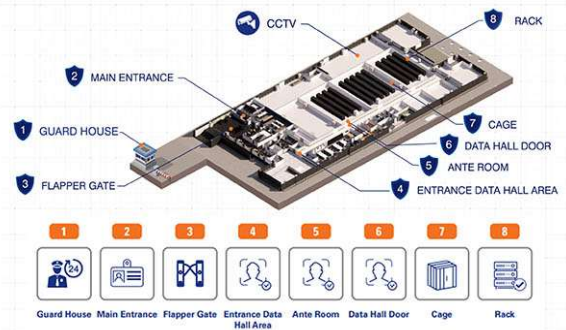
## Supreme Redundancy

A 4-route diverse fiber duct ensures top-tier network reliability, establishing Telehouse as a trustworthy digital infrastructure provider.



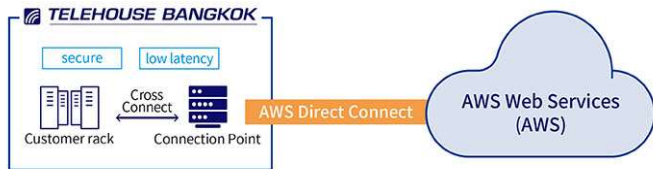
## Multiple Security Zone

8 security levels to protect against unauthorized access



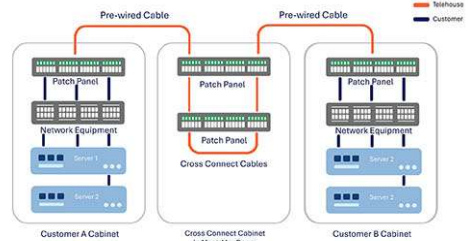
## Direct Connect Location

Customers can now directly access over 240 services, including AWS's generative AI services, via AWS Direct Connect through a dedicated network.



## Enhancing Connectivity with Cross Connect Service

- ✓ Low-Latency Connectivity
- ✓ High-Performance Reliability
- ✓ Superior Redundant Design
- ✓ One Price, Any Data Hall



## Why Choose Telehouse?

Trusted by over 3,000 companies for exceptional IT infrastructure and connectivity solutions.



**Strategic Connections:** Emphasize the value of building strategic connections within our ecosystem.



**24/7 Support:** Highlight the around-the-clock availability of the help desk, ensuring agility and excellent service.



**Accessible Location:** Highlighting the accessibility of our Bangkok location near the Central Business District (CBD).



**100% Renewable Energy:** Stress the commitment to sustainability with data centers powered by renewable energy.



**Uptime SLA:** Outline the high level of uptime and redundancy, with a 99.999% SLA uptime guarantee.



**Global Reach:** Briefly mention the global network available through the parent company, KDDI.

## Connect with Telehouse today

If you'd like to learn more about how our enterprise connectivity solutions can benefit your business, just get in touch.

+662-017-0888

sales@telehouse.co.th

www.telehouse.co.th

Telehouse Thailand

Telehouse Thailand

